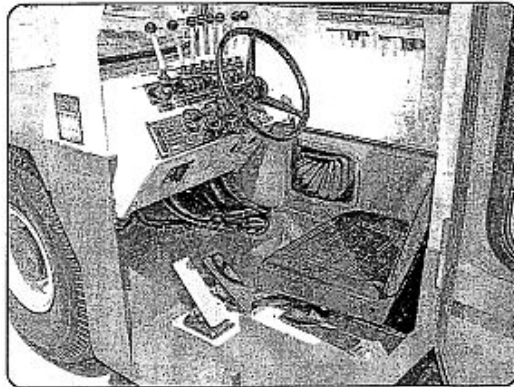


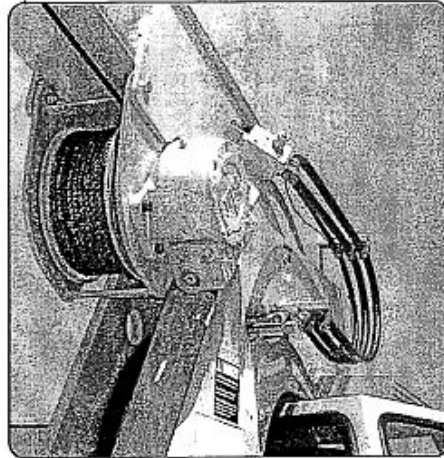
Single stage outriggers for operation in confined areas. 3330FL shown with optional cab.



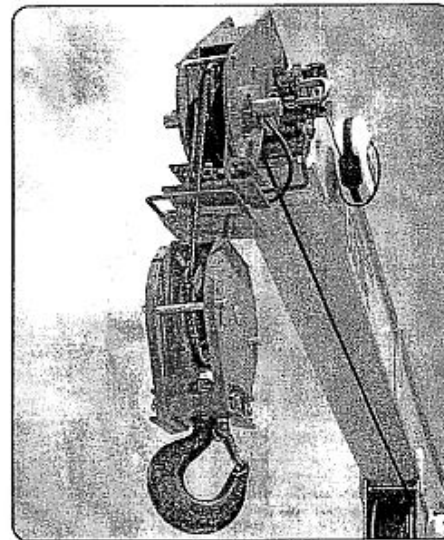
Ergonomic controls directly connected to valve with simultaneous function operation

Note: Shuttlelift reserves the right to change these specifications without notice and incurring any obligation relating to such changes.

3330F SPECS.P65-6/2005



Large winch capacity for use with 1/2" (12.7 mm) wire rope



8.5 ton (7711 kg) lift capacity with 2-part line. Quick reeve main block for conversion to single line down haul block (tools not required).

 **SHUTTLELIFT®**

49 E. Yew St. • PO Box 66 • Sturgeon Bay, WI • 54235-0066 USA
Tel: (920) 743-8650 • FAX: (920) 743-1522
E-Mail: sales@shuttlelift.com • <http://www.shuttlelift.com>

Printed In USA

Specifications

GENERAL INFORMATION

Boom topping angle 60°
 Unit weight (approximate) 13,400 lb (8078 kg)
 Outrigger pad size 8' x 15' (203 mm x 381 mm)

SERVICE CAPACITIES

Fuel tank 18.5 gal. (70 L)
 Hydraulic system 30 gal. (114 L)
 Hydraulic tank 23.5 gal. (89 L)
 Cooling system 15 qt. (14 L)
 Transmission/Torque Converter 4 gal. (15.1 L)
 Differential 2.1 gal. (7.95 L)
 Axle Wheel Hubs 2.1 qt. (1.99 L)

WINCHES

Main winch

Drum diameter 9.69" (246 mm)
 Wire rope diameter 13 mm
 Trefil 8 x 25 galv. wire rope

Wire rope length 97' (29.6 m)
 Line speed (4th layer) 88 fpm (26.8 m/min)
 Line pull (bare drum) 8,500 lb (3855 kg)

Electric recessed winch (optional):

Drum 2.5' x 9" (64 mm x 229 mm)
 Wire rope diameter 1/4" (6 mm)
 Wire rope length 100' (30.5 m)
 Line speed/pull 9 fpm (2.7 m/min)
 @ 6,000 lb (2722 kg)
 15 fpm (4.6 m/min) @ no load.
 Drum clutch release for manual payout.

STANDARD EQUIPMENT

- 3330F – 3-section boom, 9' 8" to 21' 2" (2.95 m to 6.45 m) from boom pivot pin to boom head pin
- All load carrying cylinders include load holding check valves
- 8.5 ton (7.7 metric ton) single sheave hook block, 8.00" (203 mm) pitch diameter sheaves
- 42 ft³ (3.90 m³) carrydeck – 14,000 lb (6350 kg) deck load
- 4-wheel steer
- Open cab with overhead guard
- Adjustable operator's seat with seat belt
- Electric horn
- Lights – head, tail, rear work, stop and turn signals
- Engine hourmeter
- Outriggers – hydraulic telescoping box – front and rear with independent control for each side
- 4-speed synchromesh transmission
- Power steering – hydraulic
- 10:00 x 15 tires
- Boom angle indicator
- Anti-two blocking cutout for telescope and winch
- Backup alarm
- Cummins 4B 3.3L turbo diesel engine
- Fire Extinguisher
- Load Indicator

OPTIONAL EQUIPMENT

- 3330F – 4-section manually engaged boom – length to 27' 8" (8.46 m)
- Enclosed cab with windshield wiper and right sliding window
- Independent outrigger controls.
- Adjustable operator's cushion seat with seat belt
- GM 3.0L electronic fuel injected dual fuel gasoline/LPG engine
- Crab steering

ACCESSORIES AND ATTACHMENTS

- Cold start kit (ether injector and second battery)
- Engine block heater
- Load Moment Indicator (LMI) System
- Rated Capacity Limiter (RCL)
- Flashing amber strobe light
- Rear hitch (pintle)
- Front hitch (pintle)
- 5 ton (4.5 metric ton) down haul block
- 6" (1.53 m) pin on slable boom extension (not swing away)
- Electric recessed winch
- Heater and defroster (hot water)
- Spare wheel and tire – front and rear
- Engine shut down system (diesel engine)
- High rail attachment
- Spark arrester muffler
- Non-marking tires
- Lifting lugs (four)
- Catalytic converter for diesel engine
- Headlight and taillight grilles

HYDRAULIC SYSTEM

Main pump Variable displacement piston pump with fixed displacement gear pump

Maximum flow 28.5 gpm (107.9 Lpm)
 @ 2500 rpm

Swing speed continuous at 2.05 rpm

HYDRAULIC CYLINDERS

CYCLE TIME

800 rpm 2500 rpm

Hoist Cylinder (full stroke):

Extend 14.0 sec 11.0 sec
 Retract 12.2 sec 9.2 sec

Crowd Cylinder (full stroke):

Extend 41.4 sec 18.2 sec
 Retract 18.8 sec 15.6 sec

Outriggers:

Down 20.0 sec 9.0 sec
 Up 11.6 sec 5.4 sec

DRAWBAR PULL

Unit equipped with 10 x 15 tires, dual fuel engine and no load on deck:

1st gear 9,023 lb (4093 kg)
 2nd gear 5,375 lb (2438 kg)
 3rd gear 2,960 lb (1343 kg)
 4th gear 1,700 lb (803 kg)

ENGINE

Optional (Dual Fuel – Gasoline/LPG):
 Make and model GM 3.0L EFI
 Horsepower 70 (52.2 kw) @ 2600 rpm

Standard (Diesel):
 Make and model Cummins 4B 3.3L turbo
 Horsepower 85 (63.4 kw) @ 2600 rpm

ELECTRICAL

Starting system 12 volt electric
 Battery (1) 820 CCA @ 0° F (-18° C)
 for 30 second rate
 (2) batteries with recessed winch or cold start
 Alternator 63 amp

TRANSMISSION

Type synchromesh transmission
 4-speed forward/reverse

DRIVE/STEER AXLE

Make Camaro
 Location Front of vehicle

STEERING AXLE (NON-DRIVE)

Make ShuttleR
 Location Rear of vehicle

TIRE SIZE

10:00 x 15 14PR pneumatic (standard)

TURNING SPECIFICATIONS

Turning radius: to centerline of outside wheels
 Two-wheel steer 14' 8" (4.47 m)
 Four-wheel steer 10' 2" (3.10 m)

TRAVEL SPEEDS

Standard tires, dual fuel engine:

1st gear 4.62 mph (7.44 km/h)
 2nd gear 7.26 mph (11.68 km/h)
 3rd gear 13.35 mph (21.48 km/h)
 4th gear 22.15 mph (35.65 km/h)

MAXIMUM GRADEABILITY (Paved Surface)

1st gear (calculated, standard tires, dual fuel engine):
 No load 57%
 12,000 lb (5443 kg) load 31%

Note: Gradeability is a measure of tractive effort only and does not represent grades on which the machine can operate.

Note: All specifications are stated in accordance with PCSA and ANSI B30.5 definitions, SAE standards or recommended practices, where applicable.

Note: CE compliance will require modifications along with derated load capacities chart. Consult factory.

Rated Load Capacities - 3330F

Operating Radius	3-Section Boom or 4-Section Boom With 4th Retracted				MAIN BOOM	Operating Radius	4-Section Boom With 4th Extended			
	On Outriggers		On Rubber				On Outriggers		On Rubber	
	Front	350'	Front	350'			Front	350'	Front	360'
5' (1.5 m)	5,175,000 lb (2,347,111 kg)	5,110,000 lb (2,317,111 kg)	10,000 lb (4,536 kg)	10,000 lb (4,536 kg)	MAIN BOOM	5	5,200 lb (2,357 kg)	6,100 lb (2,767 kg)	6,100 lb (2,767 kg)	5,100 lb (2,312 kg)
6' (1.8 m)	4,170,000 lb (1,892,000 kg)	4,140,000 lb (1,878,000 kg)	7,000 lb (3,175 kg)	7,400 lb (3,357 kg)		6	5,200 lb (2,357 kg)	6,100 lb (2,767 kg)	6,100 lb (2,767 kg)	5,100 lb (2,312 kg)
8' (2.4 m)	3,170,000 lb (1,438,000 kg)	3,100,000 lb (1,407,000 kg)	7,100 lb (3,223 kg)	4,400 lb (1,996 kg)		8	5,200 lb (2,357 kg)	5,200 lb (2,357 kg)	5,200 lb (2,357 kg)	4,200 lb (1,905 kg)
10' (3.0 m)	2,170,000 lb (984,000 kg)	2,100,000 lb (953,000 kg)	4,700 lb (2,132 kg)	2,900 lb (1,320 kg)		10	4,700 lb (2,132 kg)	4,700 lb (2,132 kg)	4,700 lb (2,132 kg)	3,700 lb (1,680 kg)
12' (3.7 m)	1,670,000 lb (758,000 kg)	1,600,000 lb (727,000 kg)	3,400 lb (1,542 kg)	2,175 lb (987 kg)		12	4,400 lb (1,996 kg)	4,400 lb (1,996 kg)	3,600 lb (1,633 kg)	2,450 lb (1,111 kg)
14' (4.3 m)	1,170,000 lb (533,000 kg)	1,100,000 lb (499,000 kg)	2,800 lb (1,267 kg)	1,700 lb (771 kg)		14	4,400 lb (1,996 kg)	4,400 lb (1,996 kg)	2,900 lb (1,316 kg)	1,875 lb (856 kg)
16' (4.9 m)	870,000 lb (394,000 kg)	800,000 lb (363,000 kg)	2,150 lb (975 kg)	1,325 lb (601 kg)		16	4,400 lb (1,996 kg)	4,400 lb (1,996 kg)	3,200 lb (1,452 kg)	1,525 lb (692 kg)
18' (5.5 m)	670,000 lb (304,000 kg)	600,000 lb (272,000 kg)	1,775 lb (805 kg)	1,100 lb (499 kg)		18	4,400 lb (1,996 kg)	4,400 lb (1,996 kg)	2,700 lb (1,225 kg)	1,225 lb (558 kg)
20' (6.1 m)	470,000 lb (213,000 kg)	400,000 lb (181,000 kg)	1,525 lb (692 kg)	850 lb (386 kg)		20	4,300 lb (1,950 kg)	3,150 lb (1,428 kg)	1,600 lb (726 kg)	1,000 lb (454 kg)
22' (6.7 m)	370,000 lb (168,000 kg)	300,000 lb (136,000 kg)	1,350 lb (612 kg)	825 lb (374 kg)		22	3,700 lb (1,678 kg)	2,700 lb (1,225 kg)	1,375 lb (624 kg)	850 lb (386 kg)
24.5' (7.47 m)	2,850 lb (1,293 kg)	2,500 lb (1,134 kg)	1,150 lb (523 kg)	675 lb (306 kg)		24.5	3,100 lb (1,406 kg)	2,350 lb (1,065 kg)	1,200 lb (544 kg)	700 lb (318 kg)
26' (7.92 m)	2,700 lb (1,225 kg)	2,350 lb (1,065 kg)	1,100 lb (499 kg)	650 lb (295 kg)		26	2,700 lb (1,225 kg)	2,150 lb (975 kg)	1,100 lb (499 kg)	650 lb (295 kg)
28' (8.53 m)	2,500 lb (1,134 kg)	2,150 lb (975 kg)	1,050 lb (476 kg)	625 lb (283 kg)		28	2,500 lb (1,134 kg)	1,900 lb (862 kg)	875 lb (397 kg)	600 lb (272 kg)
30' (9.14 m)	2,300 lb (1,043 kg)	1,950 lb (886 kg)	1,000 lb (454 kg)	600 lb (272 kg)		30	2,300 lb (1,043 kg)	1,700 lb (771 kg)	850 lb (386 kg)	475 lb (215 kg)
31' (9.45 m)	2,100 lb (953 kg)	1,750 lb (793 kg)	950 lb (431 kg)	575 lb (261 kg)		31	2,100 lb (953 kg)	1,625 lb (737 kg)	800 lb (363 kg)	425 lb (193 kg)

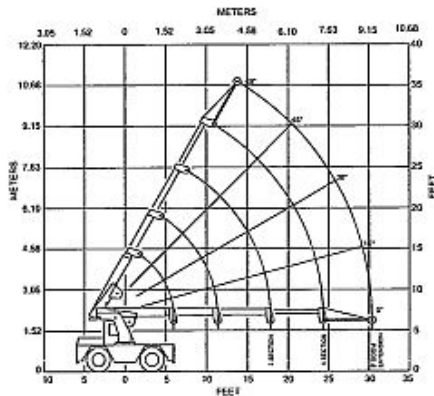
0°	5°	10°	20°	25°
2,800 lb (1,270 kg)	2,350 lb (1,065 kg)	2,200 lb (998 kg)	2,200 lb (998 kg)	2,200 lb (998 kg)
30°	39°	40°	45°	50°
2,700 lb (1,225 kg)	2,600 lb (1,179 kg)	2,575 lb (1,168 kg)	2,000 lb (907 kg)	2,150 lb (975 kg)
55°	60°			
3,225 lb (1,466 kg)	3,000 lb (1,361 kg)			

0°	5°	10°	20°	25°
2,800 lb (1,270 kg)	2,350 lb (1,065 kg)	2,200 lb (998 kg)	2,200 lb (998 kg)	2,200 lb (998 kg)
30°	39°	40°	45°	50°
2,700 lb (1,225 kg)	2,600 lb (1,179 kg)	2,575 lb (1,168 kg)	2,000 lb (907 kg)	2,150 lb (975 kg)
55°	60°			
3,225 lb (1,466 kg)	3,000 lb (1,361 kg)			

* LIMIT RATINGS TO 11,000 LB (5,000 KG) WHEN 3RD SECTION IS EXTENDED ANY AMOUNT

JIB CAPACITY IS LIMITED BY BOTH STRUCTURAL CAPACITY CHART AND MAIN CAPACITY CHART.

SHADED AREAS ARE GOVERNED BY STRUCTURAL STRENGTH. DO NOT RELY ON TIPPING.



3330F 3 AND 4-SECTION BOOM
 8.5 ton (7.7 metric ton) main block, 140 lb (64 kg)
 5 ton (4.5 metric ton) ball and hook, 100 lb (45.4 kg)

CMP Ltd.
 Vancouver - Canada
 (604)908-8588
 www.deckrane.com